

REMONTOWA
SHIPBUILDING

MEMBER OF
REMONTOWA
HOLDING S.A.



Special Vessels

ROYAL  ARCTIC



 MERIAURA

OUR CLIENTS

 Trinity House



 Anthony Veder



 BBC Chartering


Państwowe
Gospodarstwo Wodne
Wody Polskie



REMONTOWA SHIPBUILDING S.A. GENERAL DESCRIPTION

REMONTOWA SHIPBUILDING S.A. is the biggest of companies belonging to REMONTOWA HOLDING which gives an opportunity to offer highly technically advanced products – from design to fully equipped ships.

REMONTOWA SHIPBUILDING S.A. owns a hull department consisting of four halls and nine bays (each equipped with overhead cranes of different lifting capacity), two stands for launching vessels using floating cranes, one stand for launching vessels into floating dock or pontoon, one side roller slipway and a 400-metre long quay equipped with essential infrastructure, compressed air, electricity and technical gases supply. The Shipyard's technical and production capabilities allow to build modern vessels up to 150 metres in length and 24 metres in width.

The Shipyard specialises in building advanced vessels such as:

- offshore support vessels (AHTS, PSV, ERRV, MPV, IMR, ROV, SOV);
- cargo vessels (container vessels, open deck carriers, LNG/LPG/LEG carriers);
- car-passenger ferries;
- multipurpose vessels (patrol boats, hydrographic ships, multifunction buoy tenders, research vessels, tugs);
- navy ships;
- fishing vessels;

The outfitting of vessels covers:

- painting;
- piping;
- machinery and deck outfitting;
- electric and electronic works;
- accommodation outfitting.

REMONTOWA SHIPBUILDING S.A. has implemented and maintains an Integrated Management System (IMS).

The individual management systems that make up the IMS are certified by national (Polski Rejestr Statków S.A. and Quality Certification Center of the Military University of Technology) and international

(DNV GL Business Assurance) certification bodies.

Certification of the Quality Management System according to ISO 9001:2015, the Occupational Health and Safety Management System according to ISO 45001:2018 and the Environmental Management System according to ISO 14001:2015 by the world-wide recognized DNV GL Business Assurance certification body is advisable and has significant importance in relation to production of civilian ships delivered to foreign customers.

Certification of the Quality Management System according to ISO 9001:2015 by national certification bodies is the basis for the certification of the QMS for compliance with the publication AQAP 2110:2016, as well as for the maintenance of the Internal Control System's certificate and the Ministry of Internal Affairs and Administration's Concession, which are of particular importance and are required for Remontowa Shipbuilding S.A. to conduct military production and trade in military goods. Confirmation for other entities from NATO that Remontowa Shipbuilding S.A. has the capability of military production and meets the necessary requirements in this regard, is assigned to the Shipyard with the NATO Commercial and Government Entity Code NGAGE:0530H.

REMONTOWA SHIPBUILDING S.A. builds vessels in conformity to the requirements and under the supervision of the following Classification Societies:

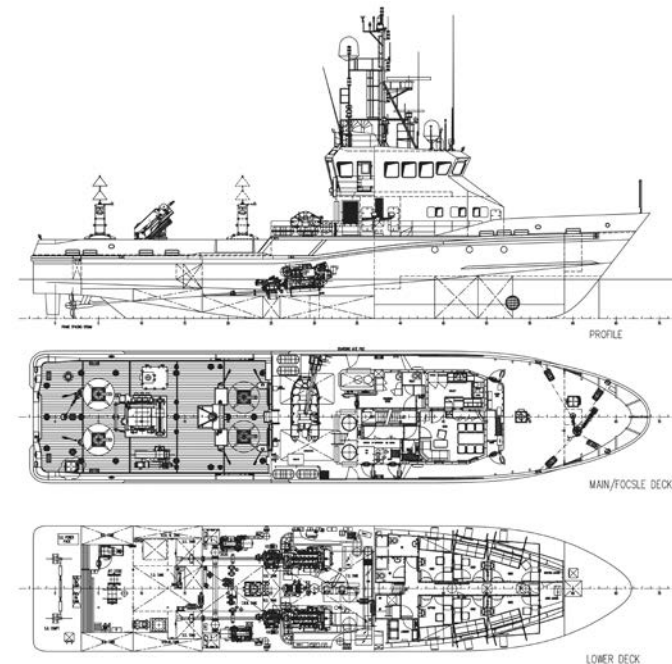
- American Bureau of Shipping;
- Bureau Veritas;
- DNV GL;
- Lloyd's Register of Shipping;
- Polish Register of Shipping.



B 841 RAPID INTERVENTION VESSEL

REMONTOWA
SHIPBUILDING

MEMBER OF
REMONTOWA
HOLDING S.A.



VESSEL'S NAME

B 841 – "Alert"

CLASS

The vessel's hull, machinery and electrical installations have been built and installed under special survey in accordance with the Rules and Regulations of Lloyd's Register of Shipping for notation:

+100A1, SSC WORKBOAT, MONO G4, +LMC, UMS, MCM, EP, LA, DP (CM).

DESCRIPTION

The vessel has been designed for buoy handling, wreck marking, towing, multi-beam and side scan hydrographic surveying.

MAIN PARTICULARS

| | |
|-----------------|---------|
| Length over all | 39,30 m |
| Length b.p. | 34,65 m |

| | |
|--------------------|------------|
| Breadth moulded | 8,00 m |
| Depth to Main Deck | 4,00 m |
| Speed | 16,5 kn |
| Bollard pull | 25 Mt |
| Deadweight | 60 t |
| Complement | 10 persons |

TANKS' CAPACITIES

| | |
|---------------------|----------------------|
| Fuel oil | 45,90 m ³ |
| Lubrication oil | 0,70 m ³ |
| Hydraulic oil | 3,50 m ³ |
| Fresh potable water | 13,00 m ³ |
| Cargo fresh water | 15,60 m ³ |
| Ballast water | 21,10 m ³ |
| Waste water | 12,30 m ³ |

PROPULSION

| | |
|--|---------------------------|
| Shaft Line with CPP as direct driven by ME | 2 x 1500 kW (at 1600 RPM) |
|--|---------------------------|

GENERATING SETS

| | |
|-----------------------|--------------------------|
| Diesel Generating Set | 2 x 140 kW (at 1500 RPM) |
|-----------------------|--------------------------|

DECK EQUIPMENT

| | |
|--------------------------|---------------------------------|
| Bow Thruster | 17,5 kN/1500 RPM/ø0,75 m |
| Steering Gear | piston (2) type, hydraulic |
| Rudder | 2 x spade type, high efficiency |
| Deck crane | 2,5 t/12,5 m |
| Capstans | 1 aft, 1 fore, 3 t each |
| Buoy chain/Towing winch | 8 t |
| Central hydraulic system | 250 bar |
| Rescue boat | 4,40 m/6 kn |
| Rescue davit | 1 t |

SURVEY EQUIPMENT

Searching Wreck Finding Sonar 90/160 kHz;
Night Vision System with stabilized Thermal Imaging Camera;
Multi-Beam Echo Sounder 1-150 m range;

Single-Beam Echo Sounder 38/200 kHz;
Position and Orientation System;
Buoy Based Tide Gauge System;
Side Scan Sonar System.

DESIGN

Remontowa Marine Design & Consulting.

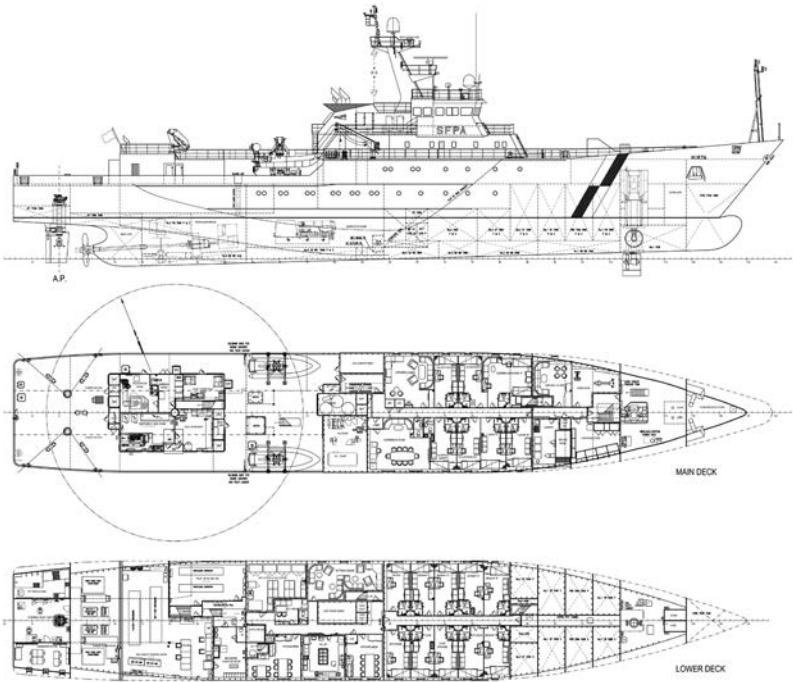
OWNER

Trinity House (UK)

YEAR OF DELIVERY

2006

B 846 FISHERY PROTECTION VESSEL



VESSEL'S NAME

B 846 – “Hirta”

CLASS

The vessel's hull, machinery and equipment have been built and installed under special survey in accordance with the Rules and Regulations of Lloyd's Register of Shipping for notation: +100A1, LMC, UMS, CAC, EP, SCM-Fiseries Protection Vessel.

DESCRIPTION

The primary function of the vessel is fishery protection in waters surrounding the mainland and islands of Scotland.

MAIN PARTICULARS

| | |
|--------------------|------------|
| Length over all | 84,00 m |
| Length b.p. | 72,00 m |
| Breadth moulded | 13,00 m |
| Depth to Main Deck | 8,20 m |
| Draught | 4,50 m |
| Speed | 12 kn |
| Deadweight | 430 t |
| Complement | 22 persons |

TANKS' CAPACITIES

| | |
|----------------------------------|-------|
| Fuel | 230 t |
| Fresh water | 90 t |
| Lubricating oil in storage tanks | 6 t |
| Hydraulic oil in storage tanks | 2 t |
| Provisions and stores | 20 t |

PROPULSION

| | |
|-----------------|---------------------------|
| Diesel Electric | 2 x 2000 kW (at 1000 RPM) |
| Main Gearbox | Twin input/single output |
| Propeller | ø3,6 m |

GENERATING SETS

| | |
|---------------------|---------------------------|
| Main Generator | 3 x 1620 kW (at 1000 RPM) |
| Harbour Generator | 296 kW (at 1500 RPM) |
| Emergency Generator | 99 kW (at 1500 RPM) |

DECK MACHINERY

| | |
|--------------------------------|--------|
| Bow Retractable Combo Thruster | 500 kW |
| Stern Thruster | 350 kW |

DESIGN

Remontowa Marine Design & Consulting.

OWNER

Scottish Fisheries Protection Agency (Scotland)

YEAR OF DELIVERY

2008

B 812 RESCUE VESSEL



VESSEL'S NAME

B 812 – "Sztorm"

CLASS

PRS*KM RESCUE VESSEL II AUT NAV 1

DESCRIPTION

The main purpose of the vessel is search and rescue operations, also in bad weather conditions, at Baltic Sea including:

- evacuating survivors from other vessels, lifeboats or directly from water surface;
- providing first aid to injured;
- co-operating with helicopter.

MAIN PARTICULARS

| | |
|--------------------|---------|
| Length over all | 36,90 m |
| Length b.p. | 33,85 m |
| Breadth moulded | 8,10 m |
| Depth to Main Deck | 3,90 m |
| Draught | 2,50 m |
| GT | 276 t |
| Speed | 24 kn |

TANKS' CAPACITIES

| | |
|-------------|----------------------|
| Fuel oil | 54,60 m ³ |
| Fresh water | 4,40 m ³ |

ACCOMMODATION

| | |
|------------|-----|
| Crew | 7+3 |
| Passengers | 12 |

PROPULSION

| | |
|------------------|--|
| Aft Engine Room | 2 x 1440 kW (at 2250 RPM) |
| | 2 x Marine Reduction Gear (single step, non reverse type with vertical offset) |
| | 2 x Shaft Line with Propeller |
| Fore Engine Room | 1 x 2040 kW (at 2100 RPM) |
| | 1 x Marine Reduction Gear (single step, reverse type with vertical offset) |
| | 1 x Shaft Line with Propeller |

GENERATING SETS

| | |
|------------------------|------------|
| Diesel Generating Sets | 2 x 160 kW |
|------------------------|------------|

DESIGN

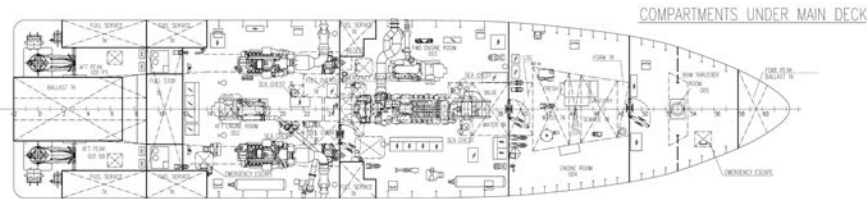
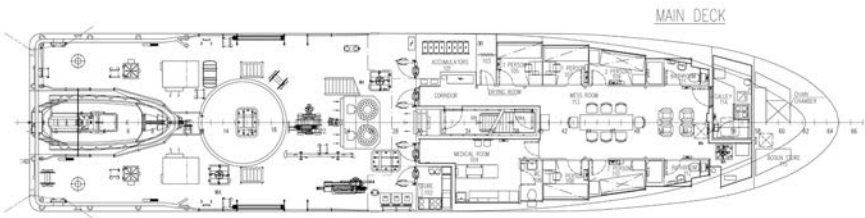
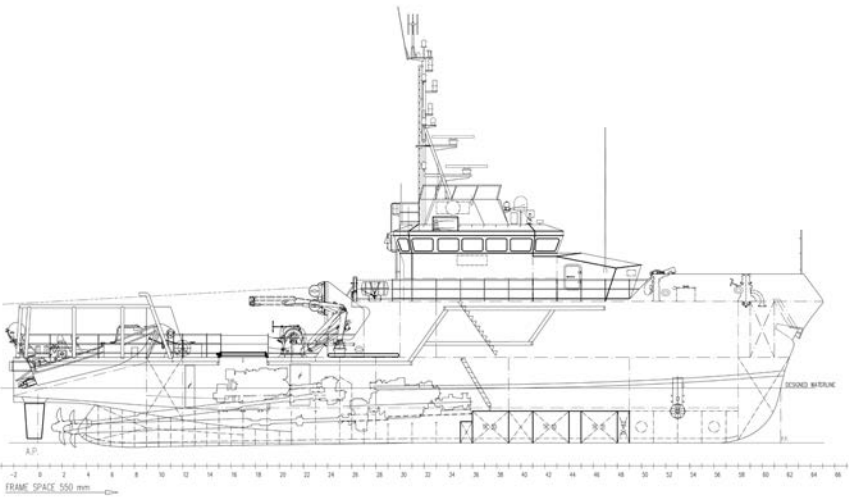
Remontowa Marine Design & Consulting in cooperation with the Owner.

OWNER

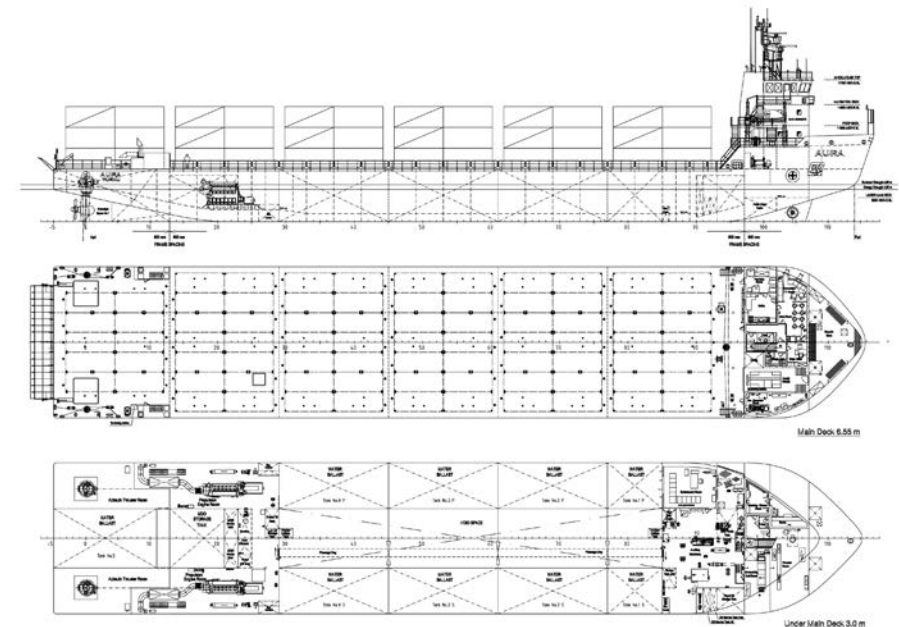
Maritime Search & Rescue Service – Gdynia (Poland)

YEAR OF DELIVERY

2012



B 602 OPEN DECK CARRIER



VESSEL'S NAME

B 602 – "Aura"

CLASS

BV I +Hull, +Mach, Deck Ship/Container Ship,
Unrestricted Navigation, Ice Class 1A, AUT-UMS

MAIN PARTICULARS

| | |
|--------------------|-----------|
| Length over all | 101,30 m |
| Length b.p. | 95,50 m |
| Breadth moulded | 18,80 m |
| Depth to Main Deck | 6,55 m |
| Design draught | 4,00 m |
| Maximum speed | 13 kn |
| Economy speed | 9-10 kn |
| Deadweight | 4710 t |
| Complement | 8 persons |

TANKS' CAPACITIES

| | |
|-----------------|------------------------|
| Fuel MDO | 234,00 m ³ |
| Fuel DO | 54,00 m ³ |
| Lubricating oil | 10,00 m ³ |
| Potable water | 38,00 m ³ |
| Ballast water | 3900,00 m ³ |
| Overflow tank | 6,00 m ³ |
| Sludge | 10,00 m ³ |
| Grey water | 5,00 m ³ |

PROPULSION

| | |
|------------------------|---------------------------------|
| Main Engine | 2 x 2220 kW (at 750 RPM) |
| Azimuth Thrusters | 2 x CPP of 1700 kW (at 750 RPM) |
| PTO Generator | 2 x 650 kW (at 750 RPM) |
| Oil Fired Water Boiler | 1000 kW |

GENERATING SETS

| | |
|---------------------|----------------------|
| Diesel Generator | 276 kW (at 1500 RPM) |
| Emergency Generator | 80 kW (at 1500 RPM) |

DECK EQUIPMENT

| | |
|------------------------|---------------------------------------|
| Bow Thruster | 450 kW, ø1,24 m, el. |
| Mooring/anchor winches | 2 units of 60 kN each |
| Capstans | 2 aft + 1 fore of 60 kN each |
| Anchors | 2 x 2,85 t |
| Anchor chains | 2 units of 42 mm, 18 x 27,5 m each |
| Stern ramp | 14 x 2,5 m |
| Life boats | 2 x off (one as MOB) |
| Davits | 2 units |

NAVIGATION EQUIPMENT

ARPA S-Band + ARPA X-Band Radar;
Gyrocompass;
Magnetic compass;
Autopilot;
Speed Log;
Navigational Echo Sounder;
Automatic Identification System (AIS);

2 x Differential Global Positioning System (DGPS);
Electronic Chart System;
Wind Indicator;
Voyage Data Recorder.

DESIGN

Remontowa Marine Design & Consulting.

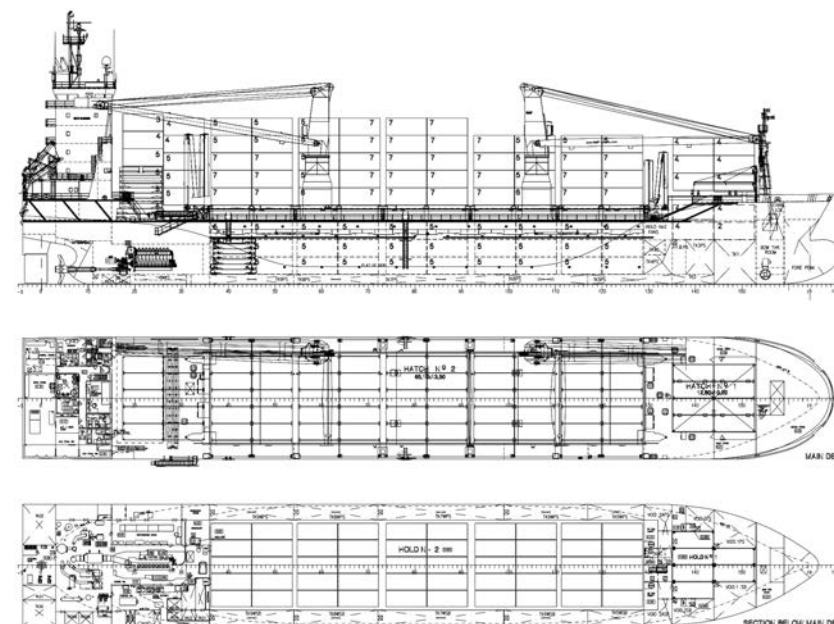
OWNER

OY Gaiamare (Finland)

YEAR OF DELIVERY

2008

B 603 CARGO VESSELS



VESSELS' NAMES

B 603/1 – "BBC Kwiatkowski";
B 603/2 – "BBC Gdańsk";
B 603/3 – "Emma";
B 603/4 – "BBC Polonia"

CLASS

GL +100 A5, E3, BMW, Solas-II-2, Reg. 19, Multi-Purpose Dry Cargo Ship equipped for carriage of containers, Strengthened for heavy cargo, GL +MC, E3, AUT, IW fulfilled

MAIN PARTICULARS

| | |
|--------------------|----------|
| Length over all | 122,45 m |
| Length b.p. | 115,15 m |
| Breadth moulded | 18,20 m |
| Depth to Main Deck | 9,50 m |
| Design draught | 6,60 m |

| | |
|------------------------------|---------|
| Scantling draught | 7,15 m |
| Service speed | 15 kn |
| Deadweight | 7700 t |
| Navigational range (approx.) | 9000 Nm |

CONTAINER CAPACITY

| | |
|-----------------------------|----------------|
| Standard ISO containers | 532 TEU |
| In holds/on hatches/on deck | 164/318/50 TEU |
| 14 t/TEU homogeneous (abt.) | 250 TEU |

PROPULSION

| | |
|--------------------|--------------------------|
| Main Engine | 1 x 4320 kW (at 600 RPM) |
| Main Gear with PTO | 720 kW (at 1800 RPM) |
| Bow Thruster | 1 x 450 kW |

GENERATING SETS

| | |
|-----------------------------|------------|
| Main Diesel Generators | 2 x 572 kW |
| Emergency Diesel Generators | 1 x 140 kW |

DECK EQUIPMENT

The Panama and Suez Canal Rules fulfilled;
The St. Lawrence Seaway Regulations and Australia Authority requirements fulfilled;
32 reefer container sockets on deck.

CARGO CRANES

Two (2) SWL 120 t cranes, heavy cargo type at PS for lift up to 240 t;
Stepless control from 0 up to 120 t;
2 x 120 t = 240 t, combinable with beam of SWL 222 t stored on board.

DESIGN

Remontowa Marine Design & Consulting.

OWNER

B603/1 – BBC Chartering (Poland)

B603/2 – BBC Chartering (Poland)
B603/3 – Nimmrich und Prahm (Germany)
B603/4 – BBC Chartering (Poland)

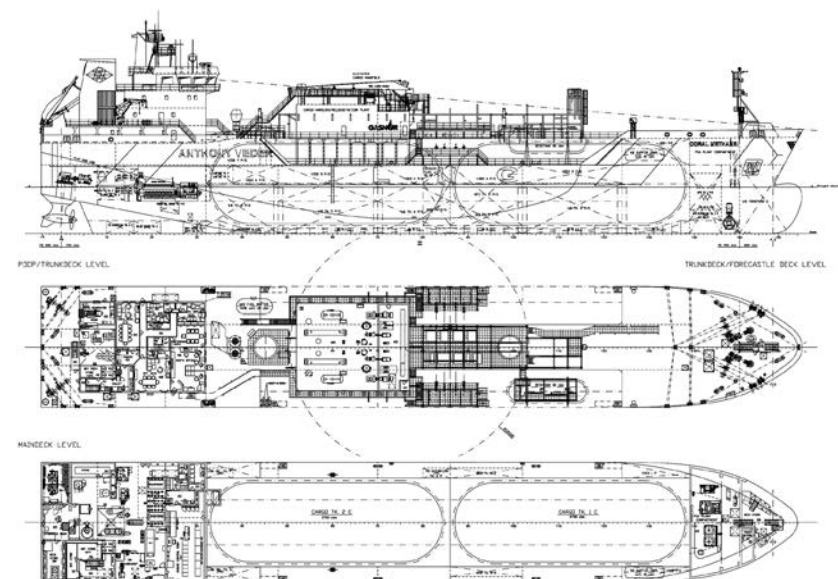
YEAR OF DELIVERY

B603/1 – 2008
B603/2, 3 – 2009
B603/4 – 2010

B 604 LNG/LEG/LPG CARRIER

REMONTOWA
SHIPBUILDING

MEMBER OF
REMONTOWA
HOLDING S.A.



VESSEL'S NAME

B604/1 – "Coral Methane"

CLASS

BV I *HULL *MACH *AUT-UMS, Liquefied Gas Carrier, Unrestricted Navigation, Ice Class IB, MON-SHAFT, Clean Ship Super, In Water Survey. Fulfilled requirements of Panama Canal, Suez Canal and USCG

MAIN PARTICULARS

| | |
|--------------------|------------|
| Length over all | 117,80 m |
| Breadth moulded | 18,60 m |
| Depth to Main Deck | 10,60 m |
| Scantling draught | 7,15 m |
| Deadweight | 5550 t |
| Complement | 19 persons |

TANKS' CAPACITIES

| | |
|-----------------|------------------------|
| Heavy fuel oil | 640,00 m ³ |
| MDO | 120,00 m ³ |
| Lubricating oil | 30,00 m ³ |
| Water ballast | 2500,00 m ³ |
| Fresh water | 150,00 m ³ |
| LNG/LEG/LPG | 7500,00 m ³ |

PROPULSION

| | |
|--|-------------|
| Diesel Engines | 2 x 3840 kW |
| Gas Generators | 2 x 2260 kW |
| Azimuth Thrusters | 2 x 2500 kW |
| Bow Thruster | 1 x 650 kW |
| When transporting LNG, the gas engines are used for power generating. In case other cargo is carried, the diesel engines will be used. | |

DESIGN

Workshop Design – Remontowa Marine Design & Consulting.

OWNER

Anthony Veder Rederijzaken (The Netherlands)

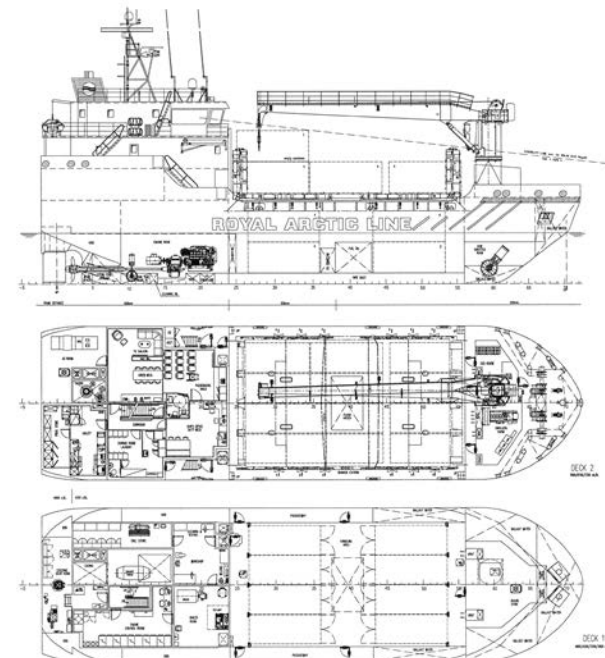
YEAR OF DELIVERY

2009

B 202/1, 2 ARCTIC CARGO VESSEL 36 TEU

REMONTOWA
SHIPBUILDING

MEMBER OF
REMONTOWA
HOLDING S.A.



VESSELS' NAMES

B 202/1 — „Ivalo Arctica“

B 202/2 — „Minik Arctica“

CLASS

DNV +1A1, General Cargo/Container Carrier, PC6, TMON, E0, NAUT-AW, DG-P, BIS, CLEAN, DAT (-35°C), HULL – PC5

MAIN PARTICULARS

| | |
|--------------------|-----------|
| Length over all | 45,35 m |
| Length b.p. | 42,83 m |
| Breadth moulded | 12,80 m |
| Depth to Main Deck | 6,10 m |
| Design draught | 3,50 m |
| Scantling draught | 4,25 m |
| Speed | 10 kn |
| Deadweight | 650 t |
| TEU capacity | 36 |
| Complement | 8 persons |

TANKS' CAPACITIES

| | |
|----------|-----------|
| Fuel oil | 130,00 m³ |
|----------|-----------|

| | |
|---------------|-----------|
| Fresh water | 30,00 m³ |
| Water ballast | 400,00 m³ |

PROPULSION

| | |
|---------------------------|---------------------------|
| Main Diesel Engine | 1 x 1050 kW (at 1200 RPM) |
| Shaft Line with Propeller | 1 x CPP, ø2,1 m |
| Bow Thruster | 1 x 200 kW |
| Stern Thruster | 1 x 200 kW |

GENERATING SETS

| | |
|-----------------------------|--------------------------|
| Generating Set | 2 x 370 kW (at 1500 RPM) |
| Harbour/Emergency Generator | 1 x 200 kW (at 1200 RPM) |

DESIGN

Remontowa Marine Design & Consulting.

OWNER

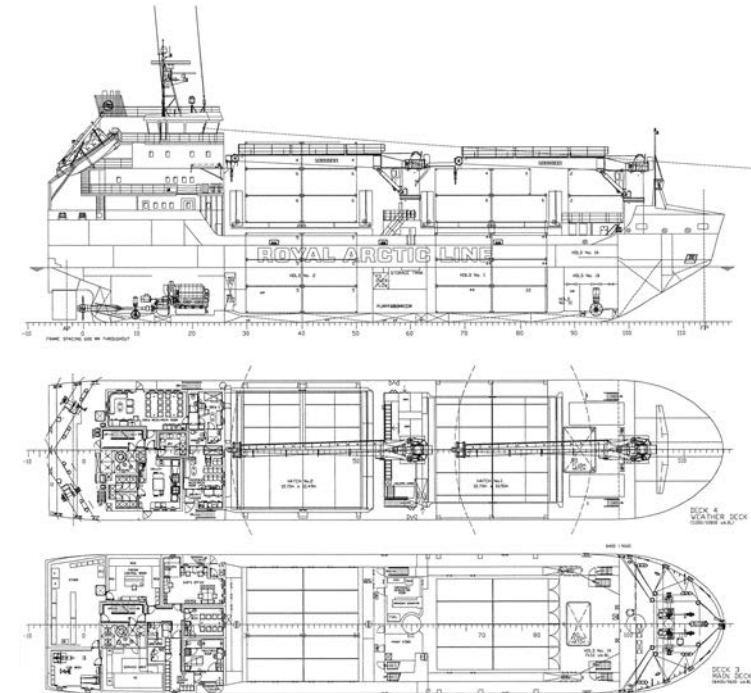
Royal Arctic Line A/S (Denmark)

YEAR OF DELIVERY

2016



B 203/1, 2 ARCTIC CARGO VESSEL 108 TEU



VESSELS' NAMES

B 203/1 – „Nanoq Arctica“
B 203/2 – „Silver Arctic“

CLASS

TDNV +1A1, General Cargo/Container Carrier, PC6,
E0, NAUT-AW, TMON, DG-P, BIS, CLEAN, BWMT-T,
DAT (-35°C), HULL – PC5

MAIN PARTICULARS

| | |
|--------------------|------------|
| Length over all | 74,20 m |
| Length b.p. | 70,01 m |
| Breadth moulded | 15,20 m |
| Depth to Main Deck | 8,40 m |
| Design draught | 4,00 m |
| Scantling draught | 6,00 m |
| Speed | 12,5 kn |
| Deadweight | 2890 t |
| TEU capacity | 108 |
| Complement | 16 persons |

TANKS' CAPACITIES

| | |
|---------------|------------------------|
| Fuel oil | 300,00 m ³ |
| Fresh water | 38,00 m ³ |
| Water ballast | 1320,00 m ³ |

PROPULSION

| | |
|---------------------------|--------------------------|
| Main Diesel Engine | 1 x 2040 kW (at 800 RPM) |
| Shaft Line with Propeller | 1 x CPP, ø2,6 m |
| Bow Thruster | 1 x 400 kW |
| Stern Thruster | 1 x 400 kW |

GENERATING SETS

| | |
|-----------------------------|-----------------------------|
| Generating Set | 2 x 450 kW (at 1500 RPM) |
| Harbour/Emergency Generator | 1 x 200 kW (at 1500 RPM) |

DESIGN

Remontowa Marine Design & Consulting.

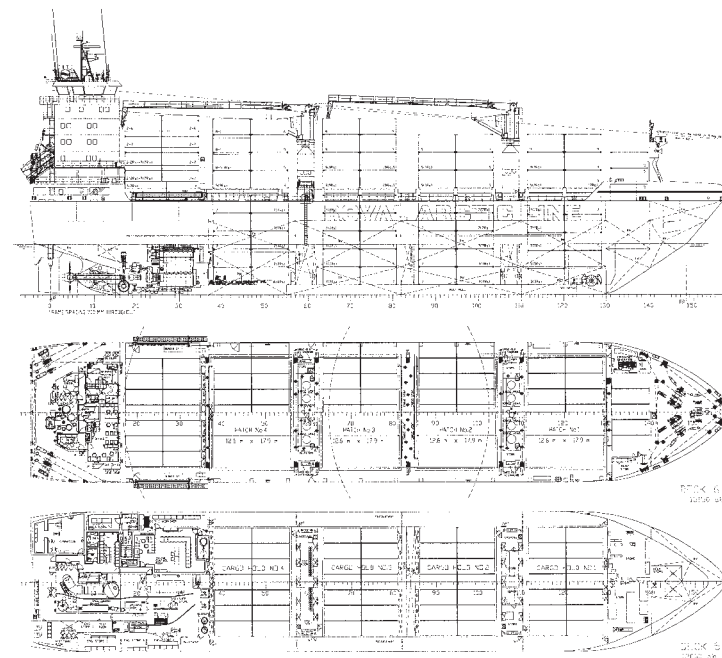
OWNER

B203/1 - Royal Arctic Line A/S (Denmark)
B203/2 – Silver Sea AS (Norway)

YEAR OF DELIVERY

B203/1 – 2020
B203/2 - 2021

B 204 ARCTIC CARGO VESSEL 606 TEU



VESSEL'S NAME

B 204 – „Malik Arctica“

CLASS

DNV +1A1, General Cargo/Container Carrier, DG-P, PC6, BIS, TMON, BWM-T, CLEAN, NAUT-AW, E0, DAT (-35°C), HULL – PC5

MAIN PARTICULARS

| | |
|--------------------|------------|
| Length over all | 114,37 m |
| Length b.p. | 103,82 m |
| Breadth moulded | 22,70 m |
| Depth to Main Deck | 15,15 m |
| Design draught | 7,00 m |
| Scantling draught | 8,20 m |
| Speed | 15,3 kn |
| Deadweight | 8609 t |
| TEU capacity | 606 |
| Complement | 16 persons |

TANKS' CAPACITIES

| | |
|---------------------|------------------------|
| Ballast water | 6150,00 m ³ |
| HFO | 1170,00 m ³ |
| MDO | 260,00 m ³ |
| Miscellaneous water | 140,00 m ³ |
| Miscellaneous oil | 90,00 m ³ |
| Fresh water | 115,00 m ³ |

PROPULSION

| | |
|---------------------------|--------------------------|
| Main Diesel Engine | 1 x 7860 kW (at 129 RPM) |
| Shaft Line with Propeller | 1 x CPP, ø5,2 m |
| Bow Thruster | 1 x 800 kW |
| Stern Thruster | 1 x 800 kW |

GENERATING SETS

| | |
|-----------------------------|--|
| Generating Set | 2 x 880 kW + 1 x 500 kW (at 1200 RPM) |
| Harbour/Emergency Generator | 1 x 230 kW (at 1800 RPM) |

DESIGN

Remontowa Marine Design & Consulting.

OWNER

Royal Arctic Line A/S (Denmark)

YEAR OF DELIVERY

2017

B 103 SAIL TRAINING SHIP

REMONTOWA
SHIPBUILDING

MEMBER OF
REMONTOWA
HOLDING S.A.



VESSEL'S NAME

B 103 – „El-Mellah”

CLASS

I + HULL + MACH - Special Service - Sail Training Ship,
SP222 - Unrestricted Navigation - IN WATER SURVEY

MAIN PARTICULARS

| | |
|--------------------|---------------------|
| Length over all | 110,00 m |
| Length b.p. | 78,00 m |
| Breadth moulded | 14,50 m |
| Depth to Main Deck | 8,60 m |
| Design draught | 5,86 m |
| Speed: | |
| On Main Engine | 12,0 kn |
| Under sails | 17,0 kn |
| Sails area | 3105 m ² |
| Displacement | 3387 t |
| Deadweight | 689 t |
| Complement: | |
| Crew+Reserve | 84 + 18 persons |
| Cadets | 120 persons |

PROPULSION

| | |
|---------------------------|----------------------------|
| Main Diesel Engine | 1 x 1380 kW (at 1800 RPM) |
| Shaft Line with Propeller | 1 x CPP, ø 2,5 m, 4 blades |

GENERATING SETS

| | |
|----------------------|--------------------------|
| Main Generating Sets | 2 x 664 kW (at 1500 RPM) |
| Shaft Generator | 1 x 620 kW (at 1500 RPM) |
| Emergency Generator | 1 x 203 kW (at 1500 RPM) |

DESIGN

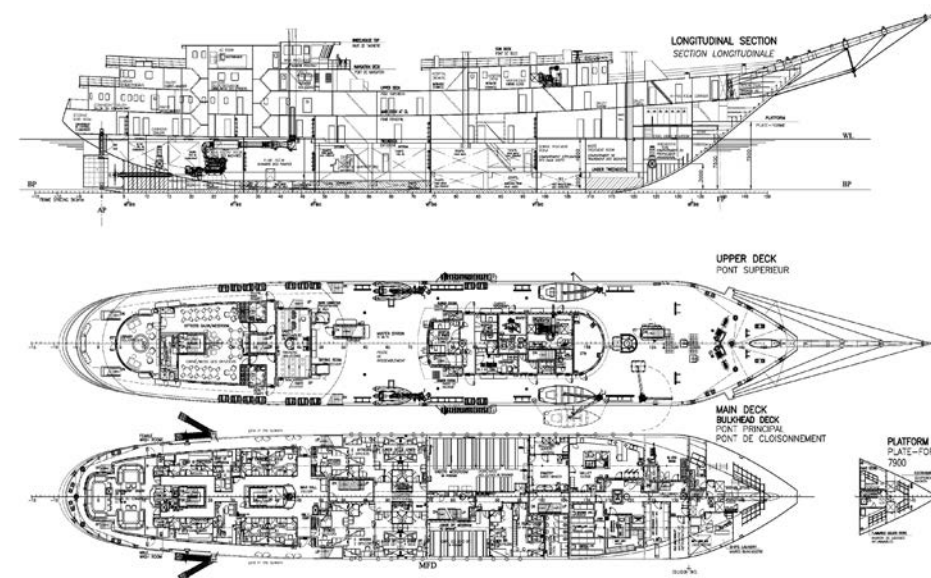
Choreń Design & Consulting in cooperation
with REMONTOWA Marine Design
& Consulting and Midcon Designer.

OWNER

Algerian Navy

YEAR OF DELIVERY

2017



258/1-3 MINEHUNTER KORMORAN II



VESSELS' NAMES

258/1 - ORP Kormoran
258/2 - ORP Albatros
258/3 - ORP Mewa

DESCRIPTION

The ship is dedicated to perform minehunting activities in Polish Exclusive Economic Zone (EEZ) autonomously, as well as a Task Unit (TU) duties performed as a part of tactical task groups (TGs) or forces (TFs) in the Baltic and the North Sea. The vessel was designed and built with great care to achieve low physical fields signature and high manoeuvrability.

Kormoran II constitutes a comprehensive platform for various mine hunting systems to include AUV, ROVs and sonars. She is able to lay mines and perform number of other complimentary tasks assigned both by national forces and/or respective allied command.

She is vertical replenishment (VERTREP), dry and fuel replenishment at sea (RAS) capable, what makes KORMORAN II ready for set of missions out of northern part of Europe. Polish programme KORMORAN II class mine-hunter is continued – two additional sister ships will be delivered to the Navy within 2022.

All ships come with training package (properly trained crews through operator and maintenance courses) and logistic support package (ship tailored set of repair documentation, spare parts, special tools and consumables).

MAIN PARTICULARS

| | |
|--------------------|----------------------------|
| Length over all | 58,50 m |
| Breadth max. | 10,30 m |
| Height (main deck) | 6,40 m |
| Height (aft deck) | 4,70 m |
| Displacement | up to 850 t |
| Crew | 45 persons (plus 6 divers) |

PROPULSION

| | |
|--------------|--|
| Main Engines | 2 x 1000 kW |
| Propulsor | 2 x 1000 kW, cycloidal propellers |
| Bow Thruster | 1 x 100 kW (258/1) 1 x 200 kW (258/2-3) |

GENERATING SETS

| | |
|----------------------|---------------------|
| Main Generating Sets | 3 x 323 kW/1800 rpm |
|----------------------|---------------------|

SPECIAL EQUIPMENT

- Combat Management System SCOT;
- Non-magnetic hull minimizing the vessel's physical field signatures;
- Triple frequency wideband, high resolution hull mounted MCM sonar (SHL-101/TM);
- Self-propelled variable depth sonar (SPVDS) SHL-300 mounted on SAAB Double Eagle Mk III (258/1);
- Remotely-controlled Autonomous Underwater vehicle SAAB SAROV (258/2-3)
- KATFISH 180 Towed SAS Sonar System with ALARS topside set (258/2-3)
- Autonomous Underwater Vehicle (AUV) Hugin 1000;
- Remotely-controlled reusable underwater vehicle Morświn (258/1);
- Remotely launched explosive charges for sea mine counter-measure "Toczek A, B, C";
- Remotely-controlled disposable underwater vehicles mine hunting system Głuptak;
- One (1) 23 mm double barrel "Wróbel-II" (258/1),
35 mm marine gun system OSU-35 K (258/2-3);

- Three (3) 12,7 mm machine guns;
- Four (4) man-portable air-defence systems "Grom";
- Two (2) type RIB;
- Integrated Bridge System;
- IFF transponder;
- Surveillance system;
- Degaussing system;
- Cathodic protection system;
- NBC system.

DESIGN

Remontowa Marine Design & Consulting (platform),
Ośrodek Badawczo-Rozwojowy Centrum Techniki Morskiej S.A.
(Combat Management System SCOT).

OWNER

Polish Navy

YEAR OF DELIVERY

2017-2022

B 860/1-6 NAVAL TUG BOAT 35T

REMONTOWA
SHIPBUILDING

MEMBER OF
REMONTOWA
HOLDING S.A.



VESSELS' NAMES:

B 860/1 H - 11 Bolko
B 860/2 H - 1 Gniewko
B 860/3 H - 2 Mieszko
B 860/4 H - 12 Semko
B 860/5 H - 3 Leszko
B 860/6 H - 13 Przemko

DESCRIPTION

Six tug boats are dedicated for towing, firefighting SAR operations, deactivation of the oil spills in the area of responsibility as well as other auxiliary tasks defined by Polish Ministry of Defence. The vessels comply to Rules of Polish Registry of Shipping.

MAIN PARTICULARS

| | |
|---------------------|--------------------|
| Length over all | 29,20 m |
| Breadth max. | 10,40 m |
| Height (midship) | 4,95 m |
| Displacement (full) | 490 t |
| Crew | 10 persons |
| Bollard pull | not less than 35 t |

PROPULSION

| | |
|--------------|------------------------------------|
| Main Engines | 2 x 1380 kW |
| Thrusters | 2 x 1193 kW, FP azimuth propellers |

GENERATING SETS

Gen sets 2x type C4.4 DITA – 86 kW

DECK EQUIPMENT

Two (2) Anchor and mooring winches
Two (2) Stern & Fore Towing winches
Towing hook - nominal pull: 50 t
Deck crane type 1,2t @ max reach 11,0 m
Fi-Fi System Class I
2x Fi-Fi monitors w nozzle for jet/fog type, 1200/300 m3/h,
Deck load 4,0 t/m2

Capability of short distance transport of 50 seamen. Oil spill response equipment – dispersant spray unit with spray arms and 300 m oil containment boom.

DESIGN

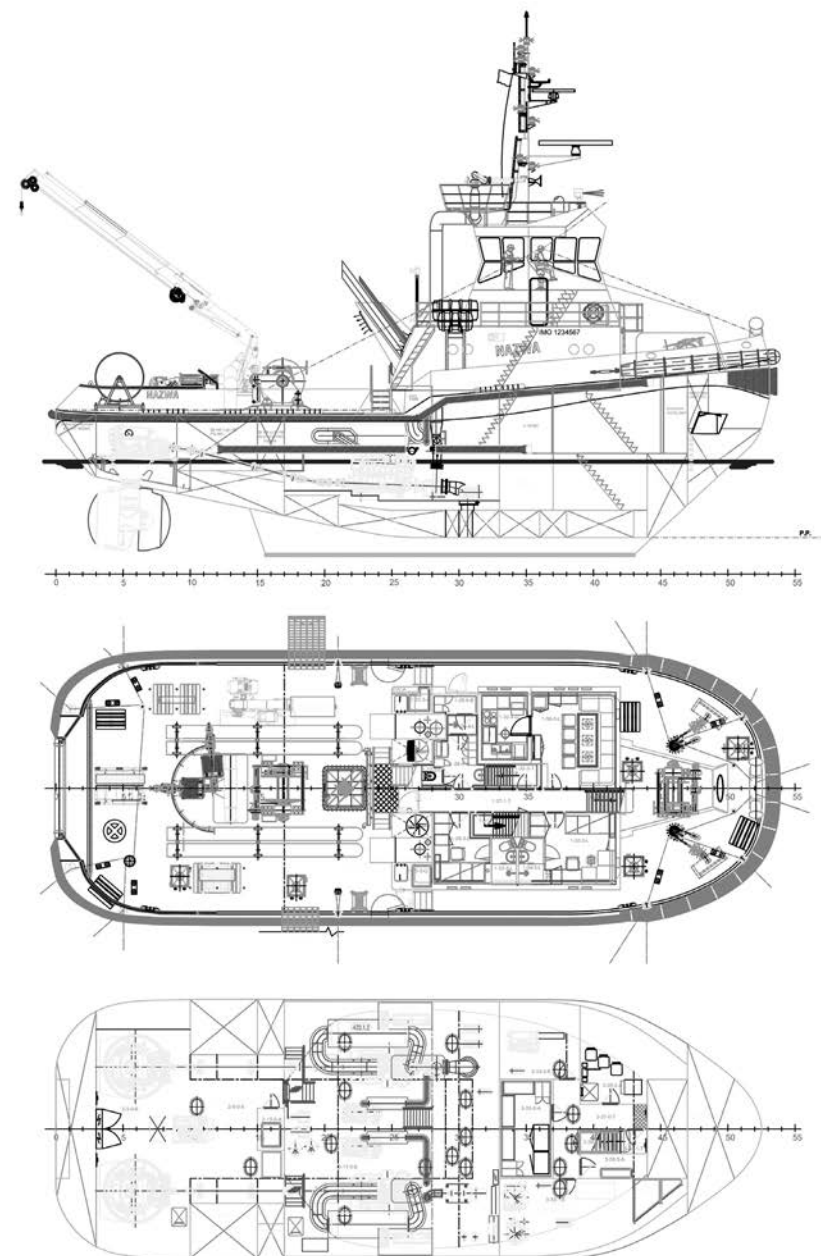
Remontowa Marine Design & Consulting.

OWNER

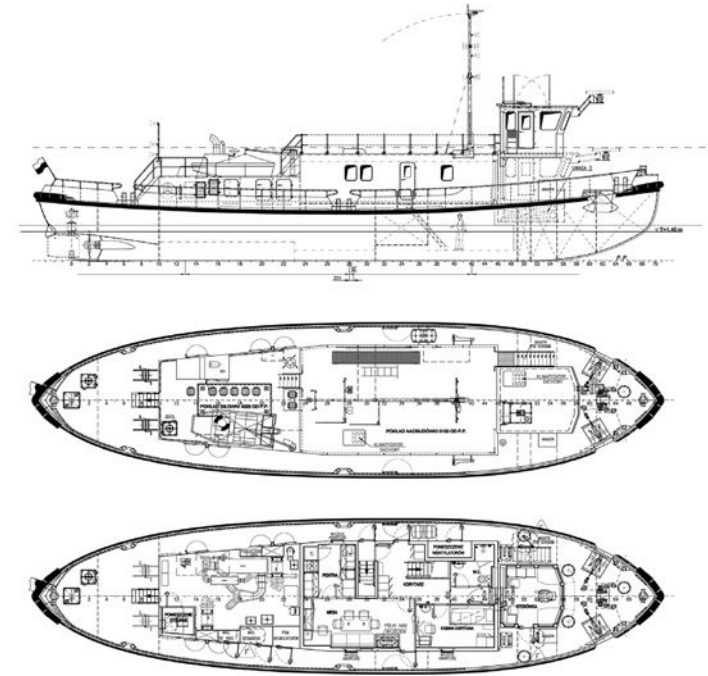
Polish Navy

YEAR OF DELIVERY

2020-2021



B 105/1-2 LINEAR ICEBREAKERS



VESSELS' NAMES

B 105/1 – "Ocelot"
B 105/2 – "Tarpan"

DESCRIPTION

Two river icebreakers ordered by Regional Water Management Authority in Szczecin are designed to move behind the head icebreakers, widening the fairway cut in the ice, and crushing the ice floe resulting from the icebreaking to prevent it from clustering and creating ice packs. The role of these icebreakers is significant considering the specifics of the Odra River, its shallow draught and the occurrence of bends and narrowing in many of its locations, which could easily lead to the formation of congestion arising from the flowing ice floes.

CLASS:

Polish Register of Shipping *sKM 2 ldp *Sprm

MAIN PARTICULARS

| | |
|-------------------------------|-----------|
| Length over all | 28,80 m |
| Length between perpendiculars | 26,11 m |
| Beam moulded | 7,50 m |
| Depth to main deck | 2,40 m |
| Design draught | 1,70 m |
| Speed | 13 km/h |
| Crew | 5 persons |
| Deadweight | 122,07 t |

PROPULSION

| | |
|---------------------------|-----------------------------|
| Main Engine | 1 x 634 kW at 1800 rpm |
| Shaft line with propeller | 1 x CPP, 4 blades, ø1300 mm |

GENERATING SETS

Main Generating Sets 86 ekW / 1500 rpm
Emergency Generating Sets 22,5 ekW / 1400 rpm

DECK EQUIPMENT

- Hydraulically lifted wheelhouse and mast
- Pneumatic life raft for 12 persons
- Assistance boat for 5 persons
- Davit for a assistance boat;
- Electrically controlled pantograph mechanism for radar antenna

DESIGN

Navishipproject S.C. in cooperation with Remontowa Marine Design & Consulting

OWNER

Regional Water Management Authority in Szczecin

YEAR OF DELIVERY

2021



REMONTOWA / MEMBER OF
SHIPBUILDING REMONTOWA
HOLDING S.A.

REMONTOWA SHIPBUILDING S.A.
ul. Swojska 8, 80-958 Gdańsk/Poland
www.remontowa-rsb.pl