

REMONTOWA
SHIPBUILDING

MEMBER OF
REMONTOWA
HOLDING S.A.



Special Vessels

ROYAL  ARCTIC



 MERIAURA

OUR CLIENTS




Anthony Veder

 BBC Chartering


Państwowe
Gospodarstwo Wodne
Wody Polskie



REMONTOWA SHIPBUILDING S.A. GENERAL DESCRIPTION

REMONTOWA SHIPBUILDING S.A. is the biggest of companies belonging to REMONTOWA HOLDING which gives an opportunity to offer highly technically advanced products – from design to fully equipped ships.

REMONTOWA SHIPBUILDING S.A. owns a hull department consisting of four halls and nine bays (each equipped with overhead cranes of different lifting capacity), two stands for launching vessels using floating cranes, one stand for launching vessels into floating dock or pontoon, one side roller slipway and a 400-metre long quay equipped with essential infrastructure, compressed air, electricity and technical gases supply. The Shipyard's technical and production capabilities allow to build modern vessels up to 150 metres in length and 24 metres in width.

The Shipyard specialises in building advanced vessels such as:

- offshore support vessels (AHTS, PSV, ERRV, MPV, IMR, ROV, SOV);
- cargo vessels (container vessels, open deck carriers, LNG/LPG/LEG carriers);
- car-passenger ferries;
- multipurpose vessels (patrol boats, hydrographic ships, multifunction buoy tenders, research vessels, tugs);
- navy ships;
- fishing vessels;

The outfitting of vessels covers:

- painting;
- piping;
- machinery and deck outfitting;
- electric and electronic works;
- accommodation outfitting.

REMONTOWA SHIPBUILDING S.A. has implemented and maintains an Integrated Management System (IMS).

The individual management systems that make up the IMS are certified by national (Polski Rejestr Statków S.A. and Quality Certification Center of the Military University of Technology) and international

(DNV GL Business Assurance) certification bodies.

Certification of the Quality Management System according to ISO 9001:2015, the Occupational Health and Safety Management System according to ISO 45001:2018 and the Environmental Management System according to ISO 14001:2015 by the world-wide recognized DNV GL Business Assurance certification body is advisable and has significant importance in relation to production of civilian ships delivered to foreign customers.

Certification of the Quality Management System according to ISO 9001:2015 by national certification bodies is the basis for the certification of the QMS for compliance with the publication AQAP 2110:2016, as well as for the maintenance of the Internal Control System's certificate and the Ministry of Internal Affairs and Administration's Concession, which are of particular importance and are required for Remontowa Shipbuilding S.A. to conduct military production and trade in military goods. Confirmation for other entities from NATO that Remontowa Shipbuilding S.A. has the capability of military production and meets the necessary requirements in this regard, is assigned to the Shipyard with the NATO Commercial and Government Entity Code NGAGE:0530H.

REMONTOWA SHIPBUILDING S.A. builds vessels in conformity to the requirements and under the supervision of the following Classification Societies:

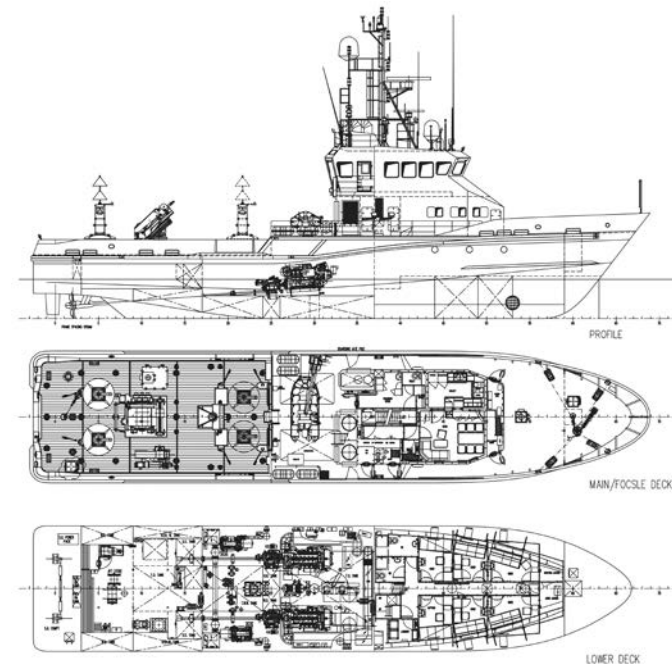
- American Bureau of Shipping;
- Bureau Veritas;
- DNV GL;
- Lloyd's Register of Shipping;
- Polish Register of Shipping.



B 841 RAPID INTERVENTION VESSEL

REMONTOWA
SHIPBUILDING

MEMBER OF
REMONTOWA
HOLDING S.A.



VESSEL'S NAME

B 841 – "Alert"

CLASS

The vessel's hull, machinery and electrical installations have been built and installed under special survey in accordance with the Rules and Regulations of Lloyd's Register of Shipping for notation:

+100A1, SSC WORKBOAT, MONO G4, +LMC, UMS, MCM, EP, LA, DP (CM).

DESCRIPTION

The vessel has been designed for buoy handling, wreck marking, towing, multi-beam and side scan hydrographic surveying.

MAIN PARTICULARS

Length over all	39,30 m
Length b.p.	34,65 m

Breadth moulded	8,00 m
Depth to Main Deck	4,00 m
Speed	16,5 kn
Bollard pull	25 Mt
Deadweight	60 t
Complement	10 persons

TANKS' CAPACITIES

Fuel oil	45,90 m ³
Lubrication oil	0,70 m ³
Hydraulic oil	3,50 m ³
Fresh potable water	13,00 m ³
Cargo fresh water	15,60 m ³
Ballast water	21,10 m ³
Waste water	12,30 m ³

PROPULSION

Shaft Line with CPP as direct driven by ME	2 x 1500 kW (at 1600 RPM)
---	---------------------------

GENERATING SETS

Diesel Generating Set	2 x 140 kW (at 1500 RPM)
-----------------------	--------------------------

DECK EQUIPMENT

Bow Thruster	17,5 kN/1500 RPM/ø0,75 m
Steering Gear	piston (2) type, hydraulic
Rudder	2 x spade type, high efficiency
Deck crane	2,5 t/12,5 m
Capstans	1 aft, 1 fore, 3 t each
Buoy chain/Towing winch	8 t
Central hydraulic system	250 bar
Rescue boat	4,40 m/6 kn
Rescue davit	1 t

SURVEY EQUIPMENT

Searching Wreck Finding Sonar 90/160 kHz;
Night Vision System with stabilized Thermal Imaging Camera;
Multi-Beam Echo Sounder 1-150 m range;

Single-Beam Echo Sounder 38/200 kHz;
Position and Orientation System;
Buoy Based Tide Gauge System;
Side Scan Sonar System.

DESIGN

Remontowa Marine Design & Consulting.

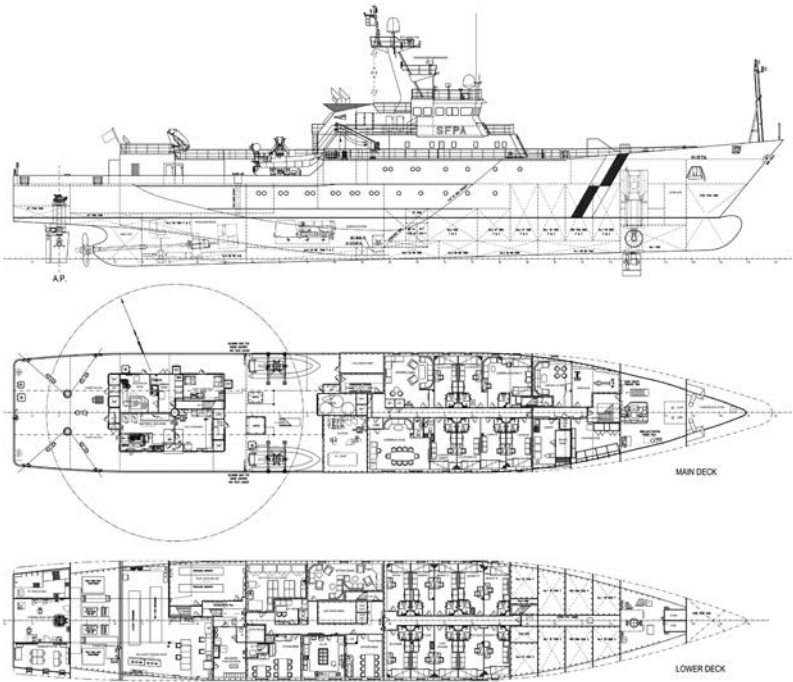
OWNER

Trinity House (UK)

YEAR OF DELIVERY

2006

B 846 FISHERY PROTECTION VESSEL



VESSEL'S NAME

B 846 – “Hirta”

CLASS

The vessel's hull, machinery and equipment have been built and installed under special survey in accordance with the Rules and Regulations of Lloyd's Register of Shipping for notation: +100A1, LMC, UMS, CAC, EP, SCM-Fiseries Protection Vessel.

DESCRIPTION

The primary function of the vessel is fishery protection in waters surrounding the mainland and islands of Scotland.

MAIN PARTICULARS

Length over all	84,00 m
Length b.p.	72,00 m
Breadth moulded	13,00 m
Depth to Main Deck	8,20 m
Draught	4,50 m
Speed	12 kn
Deadweight	430 t
Complement	22 persons

TANKS' CAPACITIES

Fuel	230 t
Fresh water	90 t
Lubricating oil in storage tanks	6 t
Hydraulic oil in storage tanks	2 t
Provisions and stores	20 t

PROPULSION

Diesel Electric	2 x 2000 kW (at 1000 RPM)
Main Gearbox	Twin input/single output
Propeller	ø3,6 m

GENERATING SETS

Main Generator	3 x 1620 kW (at 1000 RPM)
Harbour Generator	296 kW (at 1500 RPM)
Emergency Generator	99 kW (at 1500 RPM)

DECK MACHINERY

Bow Retractable Combo Thruster	500 kW
Stern Thruster	350 kW

DESIGN

Remontowa Marine Design & Consulting.

OWNER

Scottish Fisheries Protection Agency (Scotland)

YEAR OF DELIVERY

2008

B 812 RESCUE VESSEL



VESSEL'S NAME

B 812 – "Sztorm"

CLASS

PRS*KM RESCUE VESSEL II AUT NAV 1

DESCRIPTION

The main purpose of the vessel is search and rescue operations, also in bad weather conditions, at Baltic Sea including:

- evacuating survivors from other vessels, lifeboats or directly from water surface;
- providing first aid to injured;
- co-operating with helicopter.

MAIN PARTICULARS

Length over all	36,90 m
Length b.p.	33,85 m
Breadth moulded	8,10 m
Depth to Main Deck	3,90 m
Draught	2,50 m
GT	276 t
Speed	24 kn

TANKS' CAPACITIES

Fuel oil	54,60 m ³
Fresh water	4,40 m ³

ACCOMMODATION

Crew	7+3
Passengers	12

PROPULSION

Aft Engine Room	2 x 1440 kW (at 2250 RPM)
	2 x Marine Reduction Gear (single step, non reverse type with vertical offset)
	2 x Shaft Line with Propeller
Fore Engine Room	1 x 2040 kW (at 2100 RPM)
	1 x Marine Reduction Gear (single step, reverse type with vertical offset)
	1 x Shaft Line with Propeller

GENERATING SETS

Diesel Generating Sets	2 x 160 kW
------------------------	------------

DESIGN

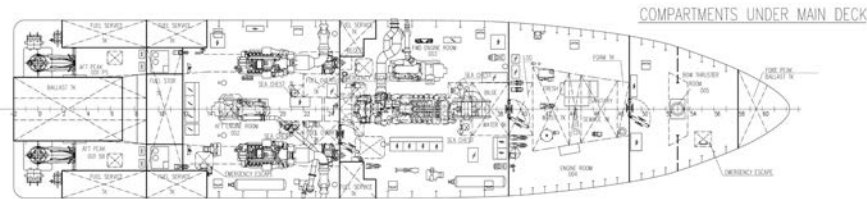
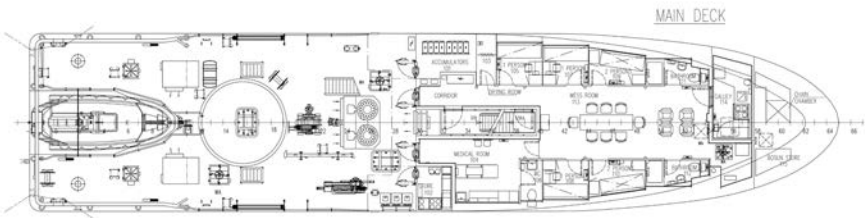
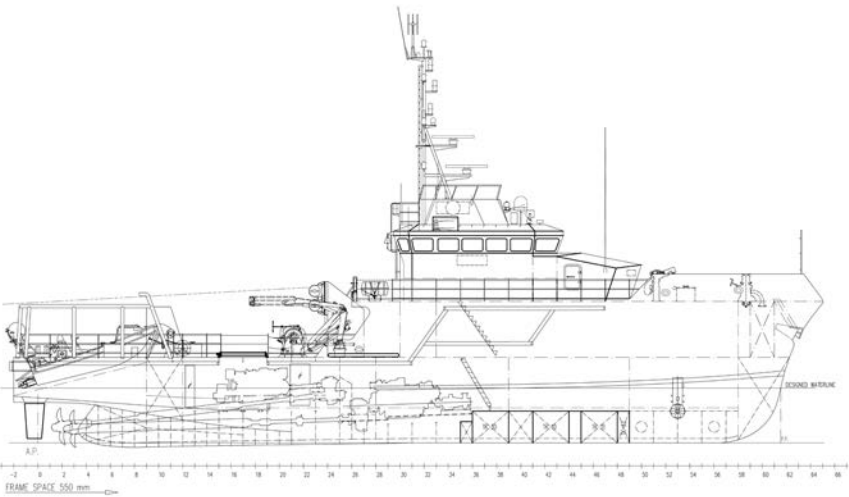
Remontowa Marine Design & Consulting in cooperation with the Owner.

OWNER

Maritime Search & Rescue Service – Gdynia (Poland)

YEAR OF DELIVERY

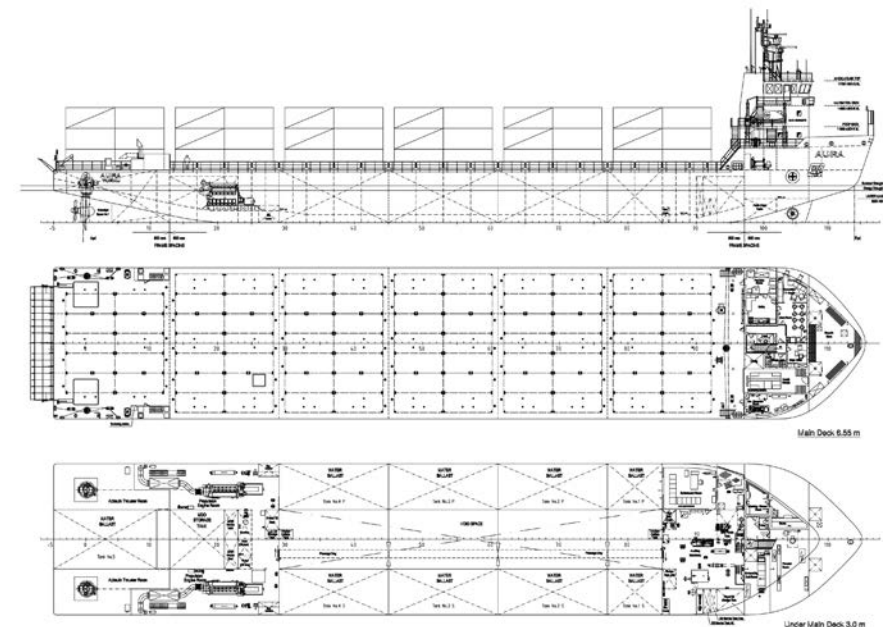
2012



B 602 OPEN DECK CARRIER

REMONTOWA
SHIPBUILDING

MEMBER OF
REMONTOWA
HOLDING S.A.



VESSEL'S NAME

B 602 – "Aura"

CLASS

BV I +Hull, +Mach, Deck Ship/Container Ship,
Unrestricted Navigation, Ice Class 1A, AUT-UMS

MAIN PARTICULARS

Length over all	101,30 m
Length b.p.	95,50 m
Breadth moulded	18,80 m
Depth to Main Deck	6,55 m
Design draught	4,00 m
Maximum speed	13 kn
Economy speed	9-10 kn
Deadweight	4710 t
Complement	8 persons

TANKS' CAPACITIES

Fuel MDO	234,00 m ³
Fuel DO	54,00 m ³
Lubricating oil	10,00 m ³
Potable water	38,00 m ³
Ballast water	3900,00 m ³
Overflow tank	6,00 m ³
Sludge	10,00 m ³
Grey water	5,00 m ³

PROPULSION

Main Engine	2 x 2220 kW (at 750 RPM)
Azimuth Thrusters	2 x CPP of 1700 kW (at 750 RPM)
PTO Generator	2 x 650 kW (at 750 RPM)
Oil Fired Water Boiler	1000 kW

GENERATING SETS

Diesel Generator	276 kW (at 1500 RPM)
Emergency Generator	80 kW (at 1500 RPM)

DECK EQUIPMENT

Bow Thruster	450 kW, ø1,24 m, el.
Mooring/anchor winches	2 units of 60 kN each
Capstans	2 aft + 1 fore of 60 kN each
Anchors	2 x 2,85 t
Anchor chains	2 units of 42 mm, 18 x 27,5 m each
Stern ramp	14 x 2,5 m
Life boats	2 x off (one as MOB)
Davits	2 units

NAVIGATION EQUIPMENT

ARPA S-Band + ARPA X-Band Radar;
Gyrocompass;
Magnetic compass;
Autopilot;
Speed Log;
Navigational Echo Sounder;
Automatic Identification System (AIS);

2 x Differential Global Positioning System (DGPS);
Electronic Chart System;
Wind Indicator;
Voyage Data Recorder.

DESIGN

Remontowa Marine Design & Consulting.

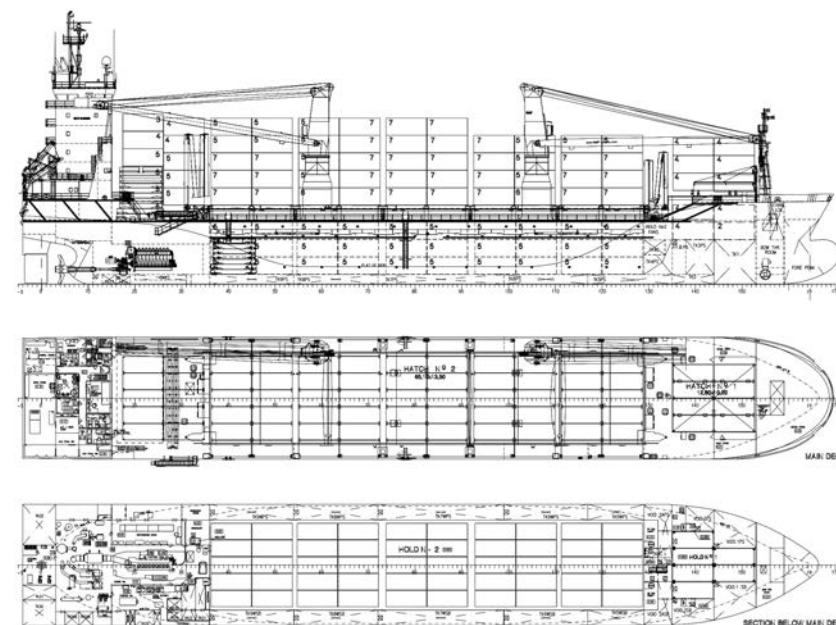
OWNER

OY Gaiamare (Finland)

YEAR OF DELIVERY

2008

B 603 CARGO VESSELS



VESSELS' NAMES

B 603/1 – "BBC Kwiatkowski";
B 603/2 – "BBC Gdańsk";
B 603/3 – "Emma";
B 603/4 – "BBC Polonia"

CLASS

GL +100 A5, E3, BMW, Solas-II-2, Reg. 19, Multi-Purpose Dry Cargo Ship equipped for carriage of containers, Strengthened for heavy cargo, GL +MC, E3, AUT, IW fulfilled

MAIN PARTICULARS

Length over all	122,45 m
Length b.p.	115,15 m
Breadth moulded	18,20 m
Depth to Main Deck	9,50 m
Design draught	6,60 m

Scantling draught	7,15 m
Service speed	15 kn
Deadweight	7700 t
Navigational range (approx.)	9000 Nm

CONTAINER CAPACITY

Standard ISO containers	532 TEU
In holds/on hatches/on deck	164/318/50 TEU
14 t/TEU homogeneous (abt.)	250 TEU

PROPULSION

Main Engine	1 x 4320 kW (at 600 RPM)
Main Gear with PTO	720 kW (at 1800 RPM)
Bow Thruster	1 x 450 kW

GENERATING SETS

Main Diesel Generators	2 x 572 kW
Emergency Diesel Generators	1 x 140 kW

DECK EQUIPMENT

The Panama and Suez Canal Rules fulfilled;
The St. Lawrence Seaway Regulations and Australia Authority requirements fulfilled;
32 reefer container sockets on deck.

CARGO CRANES

Two (2) SWL 120 t cranes, heavy cargo type at PS for lift up to 240 t;
Stepless control from 0 up to 120 t;
2 x 120 t = 240 t, combinable with beam of SWL 222 t stored on board.

DESIGN

Remontowa Marine Design & Consulting.

OWNER

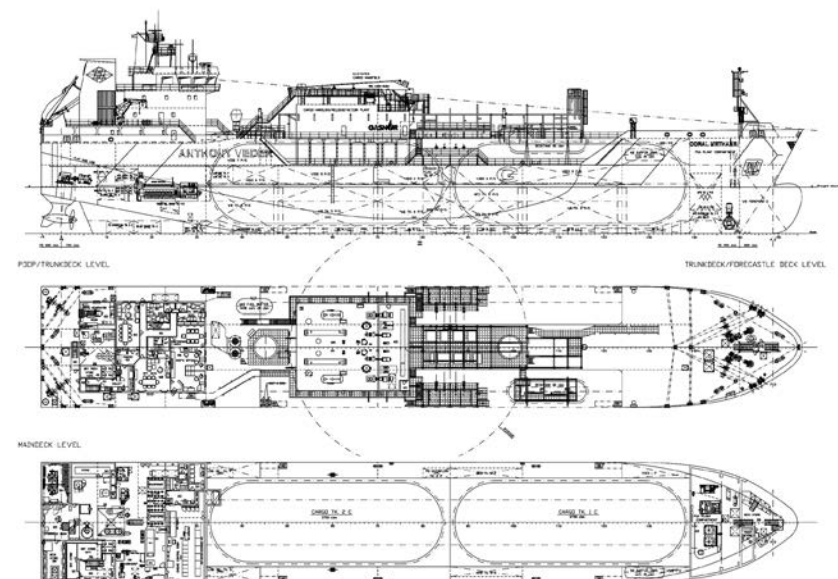
B603/1 – BBC Chartering (Poland)

B603/2 – BBC Chartering (Poland)
B603/3 – Nimmrich und Prahm (Germany)
B603/4 – BBC Chartering (Poland)

YEAR OF DELIVERY

B603/1 – 2008
B603/2, 3 – 2009
B603/4 – 2010

B 604 LNG/LEG/LPG CARRIER



VESSEL'S NAME

B604/1 – "Coral Methane"

CLASS

BV I *HULL *MACH *AUT-UMS, Liquefied Gas Carrier, Unrestricted Navigation, Ice Class IB, MON-SHAFT, Clean Ship Super, In Water Survey. Fulfilled requirements of Panama Canal, Suez Canal and USCG

MAIN PARTICULARS

Length over all	117,80 m
Breadth moulded	18,60 m
Depth to Main Deck	10,60 m
Scantling draught	7,15 m
Deadweight	5550 t
Complement	19 persons

TANKS' CAPACITIES

Heavy fuel oil	640,00 m ³
MDO	120,00 m ³
Lubricating oil	30,00 m ³
Water ballast	2500,00 m ³
Fresh water	150,00 m ³
LNG/LEG/LPG	7500,00 m ³

PROPULSION

Diesel Engines	2 x 3840 kW
Gas Generators	2 x 2260 kW
Azimuth Thrusters	2 x 2500 kW
Bow Thruster	1 x 650 kW
When transporting LNG, the gas engines are used for power generating. In case other cargo is carried, the diesel engines will be used.	

DESIGN

Workshop Design – Remontowa Marine Design & Consulting.

OWNER

Anthony Veder Rederijzaken (The Netherlands)

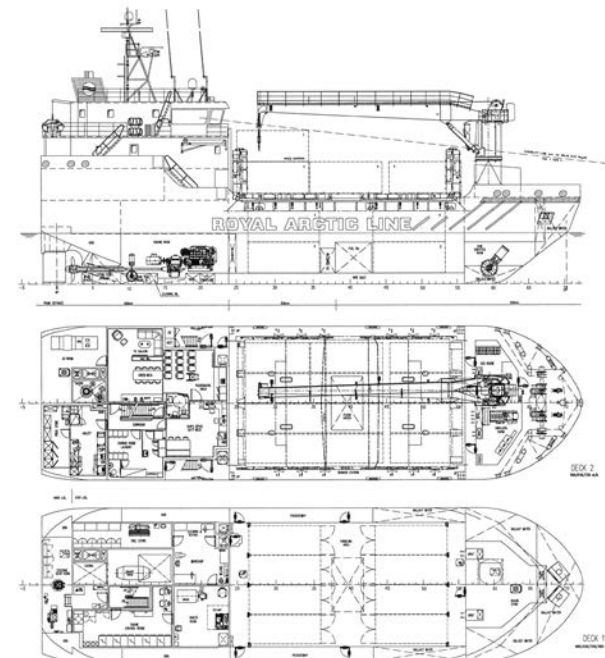
YEAR OF DELIVERY

2009

B 202/1, 2 ARCTIC CARGO VESSEL 36 TEU

REMONTOWA
SHIPBUILDING

MEMBER OF
REMONTOWA
HOLDING S.A.



VESSELS' NAMES

B 202/1 — „Ivalo Arctica“

B 202/2 — „Minik Arctica“

CLASS

DNV +1A1, General Cargo/Container Carrier, PC6, TMON, E0, NAUT-AW, DG-P, BIS, CLEAN, DAT (-35°C), HULL – PC5

MAIN PARTICULARS

Length over all	45,35 m
Length b.p.	42,83 m
Breadth moulded	12,80 m
Depth to Main Deck	6,10 m
Design draught	3,50 m
Scantling draught	4,25 m
Speed	10 kn
Deadweight	650 t
TEU capacity	36
Complement	8 persons

TANKS' CAPACITIES

Fuel oil	130,00 m³
----------	-----------

Fresh water	30,00 m³
Water ballast	400,00 m³

PROPULSION

Main Diesel Engine	1 x 1050 kW (at 1200 RPM)
Shaft Line with Propeller	1 x CPP, ø2,1 m
Bow Thruster	1 x 200 kW
Stern Thruster	1 x 200 kW

GENERATING SETS

Generating Set	2 x 370 kW (at 1500 RPM)
Harbour/Emergency Generator	1 x 200 kW (at 1200 RPM)

DESIGN

Remontowa Marine Design & Consulting.

OWNER

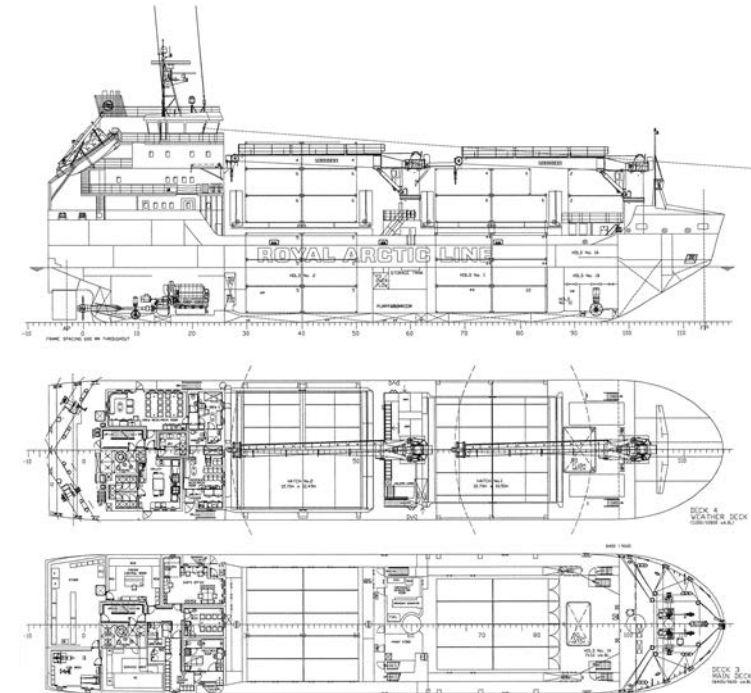
Royal Arctic Line A/S (Denmark)

YEAR OF DELIVERY

2016



B 203/1, 2 ARCTIC CARGO VESSEL 108 TEU



VESSELS' NAMES

B 203/1 – „Nanoq Arctica“
B 203/2 – „Silver Arctic“

CLASS

TDNV +1A1, General Cargo/Container Carrier, PC6,
E0, NAUT-AW, TMON, DG-P, BIS, CLEAN, BWMT-T,
DAT (-35°C), HULL – PC5

MAIN PARTICULARS

Length over all	74,20 m
Length b.p.	70,01 m
Breadth moulded	15,20 m
Depth to Main Deck	8,40 m
Design draught	4,00 m
Scantling draught	6,00 m
Speed	12,5 kn
Deadweight	2890 t
TEU capacity	108
Complement	16 persons

TANKS' CAPACITIES

Fuel oil	300,00 m ³
Fresh water	38,00 m ³
Water ballast	1320,00 m ³

PROPULSION

Main Diesel Engine	1 x 2040 kW (at 800 RPM)
Shaft Line with Propeller	1 x CPP, ø2,6 m
Bow Thruster	1 x 400 kW
Stern Thruster	1 x 400 kW

GENERATING SETS

Generating Set	2 x 450 kW (at 1500 RPM)
Harbour/Emergency Generator	1 x 200 kW (at 1500 RPM)

DESIGN

Remontowa Marine Design & Consulting.

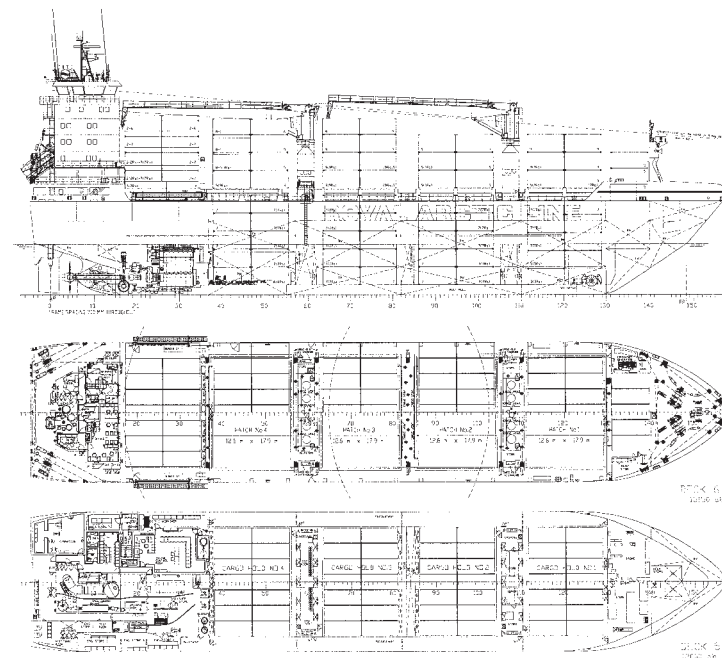
OWNER

B203/1 - Royal Arctic Line A/S (Denmark)
B203/2 – Silver Sea AS (Norway)

YEAR OF DELIVERY

B203/1 – 2020
B203/2 - 2021

B 204 ARCTIC CARGO VESSEL 606 TEU



VESSEL'S NAME

B 204 – „Malik Arctica“

CLASS

DNV +1A1, General Cargo/Container Carrier, DG-P, PC6, BIS, TMON, BWM-T, CLEAN, NAUT-AW, E0, DAT (-35°C), HULL – PC5

MAIN PARTICULARS

Length over all	114,37 m
Length b.p.	103,82 m
Breadth moulded	22,70 m
Depth to Main Deck	15,15 m
Design draught	7,00 m
Scantling draught	8,20 m
Speed	15,3 kn
Deadweight	8609 t
TEU capacity	606
Complement	16 persons

TANKS' CAPACITIES

Ballast water	6150,00 m ³
HFO	1170,00 m ³
MDO	260,00 m ³
Miscellaneous water	140,00 m ³
Miscellaneous oil	90,00 m ³
Fresh water	115,00 m ³

PROPULSION

Main Diesel Engine	1 x 7860 kW (at 129 RPM)
Shaft Line with Propeller	1 x CPP, ø5,2 m
Bow Thruster	1 x 800 kW
Stern Thruster	1 x 800 kW

GENERATING SETS

Generating Set	2 x 880 kW + 1 x 500 kW (at 1200 RPM)
Harbour/Emergency Generator	1 x 230 kW (at 1800 RPM)

DESIGN

Remontowa Marine Design & Consulting.

OWNER

Royal Arctic Line A/S (Denmark)

YEAR OF DELIVERY

2017

B 103 SAIL TRAINING SHIP

REMONTOWA
SHIPBUILDING

MEMBER OF
REMONTOWA
HOLDING S.A.



VESSEL'S NAME

B 103 – „El-Mellah”

CLASS

I + HULL + MACH - Special Service - Sail Training Ship,
SP222 - Unrestricted Navigation - IN WATER SURVEY

MAIN PARTICULARS

Length over all	110,00 m
Length b.p.	78,00 m
Breadth moulded	14,50 m
Depth to Main Deck	8,60 m
Design draught	5,86 m
Speed:	
On Main Engine	12,0 kn
Under sails	17,0 kn
Sails area	3105 m ²
Displacement	3387 t
Deadweight	689 t
Complement:	
Crew+Reserve	84 + 18 persons
Cadets	120 persons

PROPULSION

Main Diesel Engine	1 x 1380 kW (at 1800 RPM)
Shaft Line with Propeller	1 x CPP, ø 2,5 m, 4 blades

GENERATING SETS

Main Generating Sets	2 x 664 kW (at 1500 RPM)
Shaft Generator	1 x 620 kW (at 1500 RPM)
Emergency Generator	1 x 203 kW (at 1500 RPM)

DESIGN

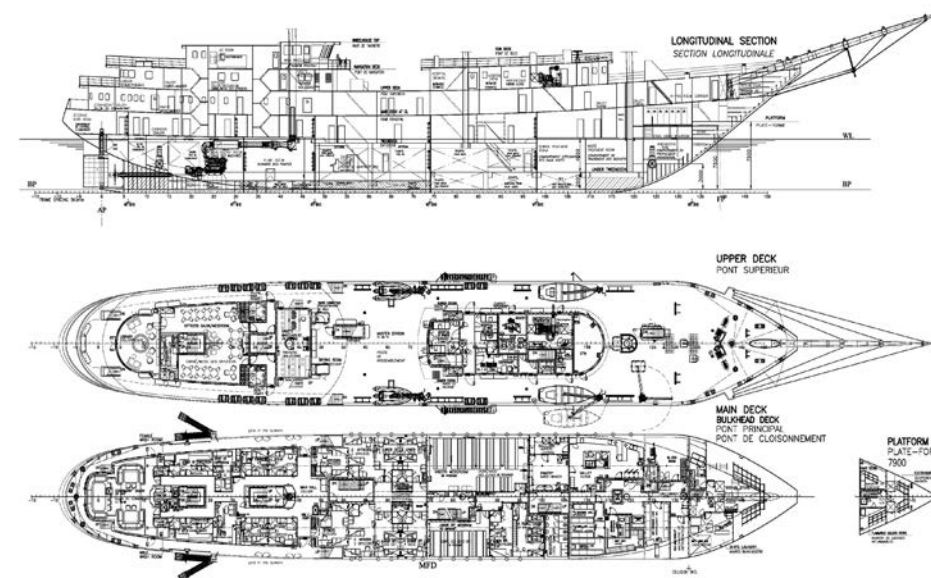
Choreń Design & Consulting in cooperation
with REMONTOWA Marine Design
& Consulting and Midcon Designer.

OWNER

Algerian Navy

YEAR OF DELIVERY

2017



258/1-3 MINEHUNTER KORMORAN II



VESSELS' NAMES

258/1 - ORP Kormoran
258/2 - ORP Albatros
258/3 - ORP Mewa

DESCRIPTION

The ship is dedicated to perform minehunting activities in Polish Exclusive Economic Zone (EEZ) autonomously, as well as a Task Unit (TU) duties performed as a part of tactical task groups (TGs) or forces (TFs) in the Baltic and the North Sea. The vessel was designed and built with great care to achieve low physical fields signature and high manoeuvrability.

Kormoran II constitutes a comprehensive platform for various mine hunting systems to include AUV, ROVs and sonars. She is able to lay mines and perform number of other complimentary tasks assigned both by national forces and/or respective allied command.

She is vertical replenishment (VERTREP), dry and fuel replenishment at sea (RAS) capable, what makes KORMORAN II ready for set of missions out of northern part of Europe. Polish programme KORMORAN II class mine-hunter is continued – two additional sister ships will be delivered to the Navy within 2022.

All ships come with training package (properly trained crews through operator and maintenance courses) and logistic support package (ship tailored set of repair documentation, spare parts, special tools and consumables).

MAIN PARTICULARS

Length over all	58,50 m
Breadth max.	10,30 m
Height (main deck)	6,40 m
Height (aft deck)	4,70 m
Displacement	up to 850 t
Crew	45 persons (plus 6 divers)

PROPULSION

Main Engines	2 x 1000 kW
Propulsor	2 x 1000 kW, cycloidal propellers
Bow Thruster	1 x 100 kW (258/1) 1 x 200 kW (258/2-3)

GENERATING SETS

Main Generating Sets	3 x 323 kW/1800 rpm
----------------------	---------------------

SPECIAL EQUIPMENT

- Combat Management System SCOT;
- Non-magnetic hull minimizing the vessel's physical field signatures;
- Triple frequency wideband, high resolution hull mounted MCM sonar (SHL-101/TM);
- Self-propelled variable depth sonar (SPVDS) SHL-300 mounted on SAAB Double Eagle Mk III (258/1);
- Remotely-controlled Autonomous Underwater vehicle SAAB SAROV (258/2-3)
- KATFISH 180 Towed SAS Sonar System with ALARS topside set (258/2-3)
- Autonomous Underwater Vehicle (AUV) Hugin 1000;
- Remotely-controlled reusable underwater vehicle Morświn (258/1);
- Remotely launched explosive charges for sea mine counter-measure "Toczek A, B, C";
- Remotely-controlled disposable underwater vehicles mine hunting system Głuptak;
- One (1) 23 mm double barrel "Wróbel-II" (258/1),
35 mm marine gun system OSU-35 K (258/2-3);

- Three (3) 12,7 mm machine guns;
- Four (4) man-portable air-defence systems "Grom";
- Two (2) type RIB;
- Integrated Bridge System;
- IFF transponder;
- Surveillance system;
- Degaussing system;
- Cathodic protection system;
- NBC system.

DESIGN

Remontowa Marine Design & Consulting (platform),
Ośrodek Badawczo-Rozwojowy Centrum Techniki Morskiej S.A.
(Combat Management System SCOT).

OWNER

Polish Navy

YEAR OF DELIVERY

2017-2022

B 860/1-6 NAVAL TUG BOAT 35T

REMONTOWA
SHIPBUILDING

MEMBER OF
REMONTOWA
HOLDING S.A.



VESSELS' NAMES:

B 860/1 H - 11 Bolko
B 860/2 H - 1 Gniewko
B 860/3 H - 2 Mieszko
B 860/4 H - 12 Semko
B 860/5 H - 3 Leszko
B 860/6 H - 13 Przemko

DESCRIPTION

Six tug boats are dedicated for towing, firefighting SAR operations, deactivation of the oil spills in the area of responsibility as well as other auxiliary tasks defined by Polish Ministry of Defence. The vessels comply to Rules of Polish Registry of Shipping.

MAIN PARTICULARS

Length over all	29,20 m
Breadth max.	10,40 m
Height (midship)	4,95 m
Displacement (full)	490 t
Crew	10 persons
Bollard pull	not less than 35 t

PROPULSION

Main Engines	2 x 1380 kW
Thrusters	2 x 1193 kW, FP azimuth propellers

GENERATING SETS

Gen sets 2x type C4.4 DITA – 86 kW

DECK EQUIPMENT

Two (2) Anchor and mooring winches
Two (2) Stern & Fore Towing winches
Towing hook - nominal pull: 50 t
Deck crane type 1,2t @ max reach 11,0 m
Fi-Fi System Class I
2x Fi-Fi monitors w nozzle for jet/fog type, 1200/300 m3/h,
Deck load 4,0 t/m2

Capability of short distance transport of 50 seamen. Oil spill response equipment – dispersant spray unit with spray arms and 300 m oil containment boom.

DESIGN

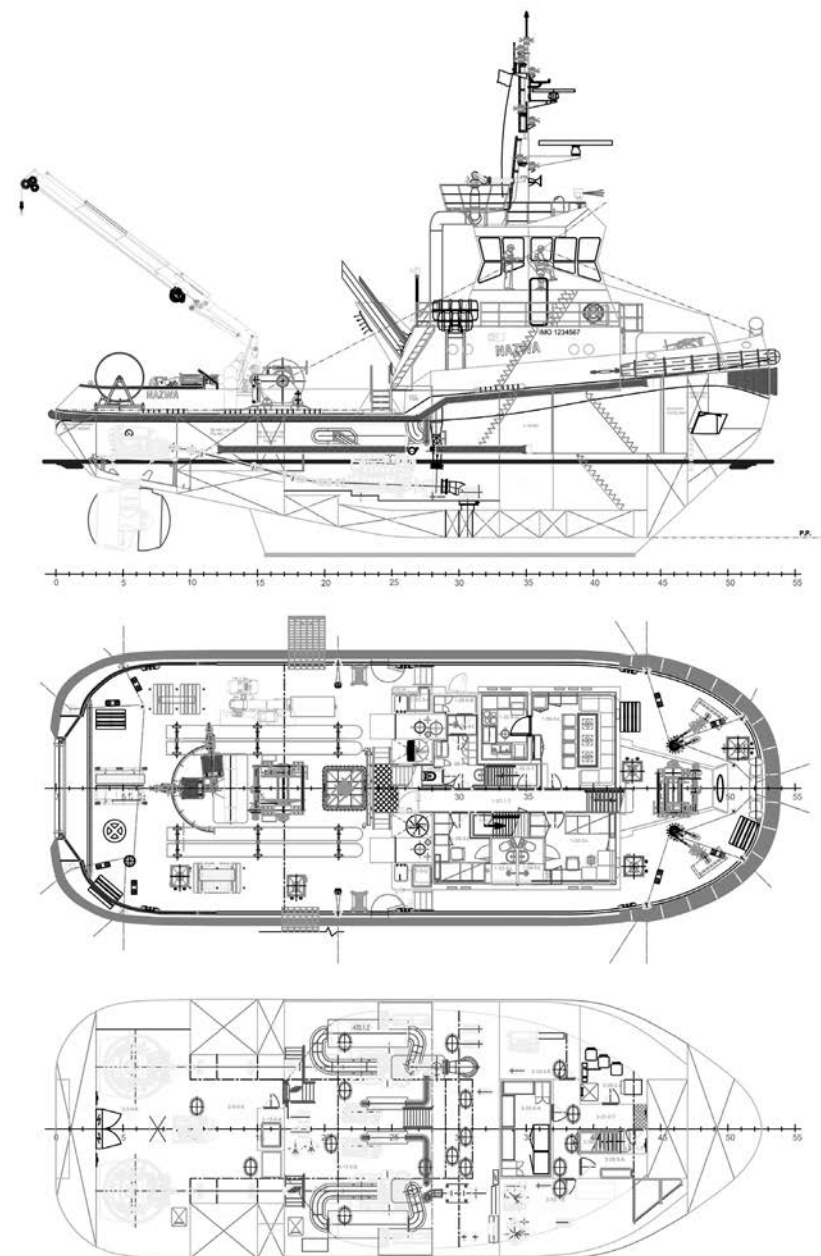
Remontowa Marine Design & Consulting.

OWNER

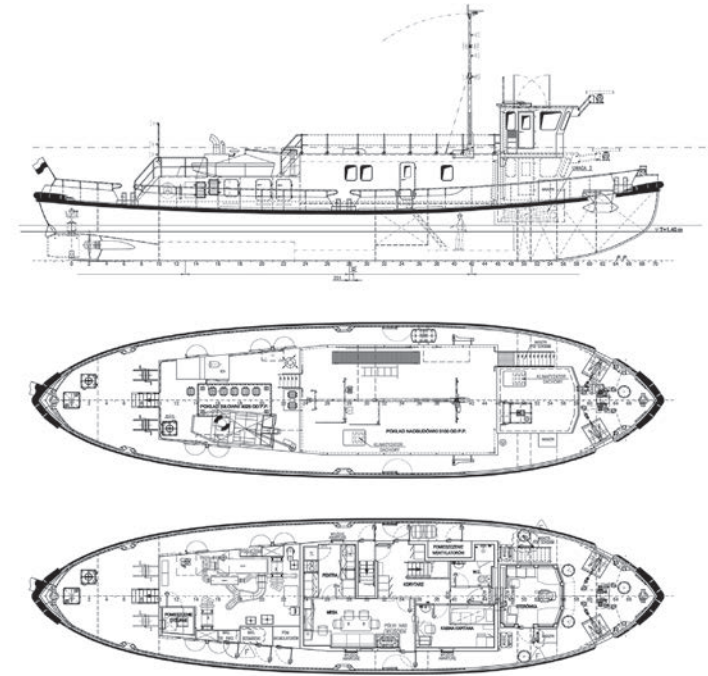
Polish Navy

YEAR OF DELIVERY

2020-2021



B 105/1-2 LINEAR ICEBREAKERS



VESSELS' NAMES

B 105/1 – "Ocelot"
B 105/2 – "Tarpan"

DESCRIPTION

Two river icebreakers ordered by Regional Water Management Authority in Szczecin are designed to move behind the head icebreakers, widening the fairway cut in the ice, and crushing the ice floe resulting from the icebreaking to prevent it from clustering and creating ice packs. The role of these icebreakers is significant considering the specifics of the Odra River, its shallow draught and the occurrence of bends and narrowing in many of its locations, which could easily lead to the formation of congestion arising from the flowing ice floes.

CLASS:

Polish Register of Shipping *sKM 2 ldp *Sprm

MAIN PARTICULARS

Length over all	28,80 m
Length between perpendiculars	26,11 m
Beam moulded	7,50 m
Depth to main deck	2,40 m
Design draught	1,70 m
Speed max.	23,5 km/h
Crew	5 persons
Deadweight	13,5 t

PROPULSION

Main Engine 1 x 634 kW at 1800 rpm
Shaft line with propeller 1 x CPP, 4 blades, ø1300 mm

GENERATING SETS

Main Generating Sets 86 ekW / 1500 rpm
Emergency Generating Sets 22,5 ekW / 1400 rpm

DECK EQUIPMENT

- Hydraulically lifted wheelhouse and mast
- Pneumatic life raft for 12 persons
- Assistance boat for 5 persons
- Davit for a assistance boat;
- Electrically controlled pantograph mechanism for radar antenna

DESIGN

Navishipproject S.C. in cooperation with
Remontowa Marine Design & Consulting

OWNER

Regional Water Management Authority in Szczecin

YEAR OF DELIVERY

2021



REMONTOWA / MEMBER OF
SHIPBUILDING REMONTOWA
HOLDING S.A.

REMONTOWA SHIPBUILDING S.A.
ul. Swojska 8, 80-958 Gdańsk/Poland
www.remontowa-rsb.pl